

State of Wyoming Corner Record

(In compliance with the CORNER PERPETUATION AND FILING ACT, Wyoming Statutes, 1977, Section 36-11-101, et. seq., and the Rules and Regulations of the Board of Registration for Professional Engineers and Professional Land Surveyors.)

Reverse side of this form may be used if more space is needed.

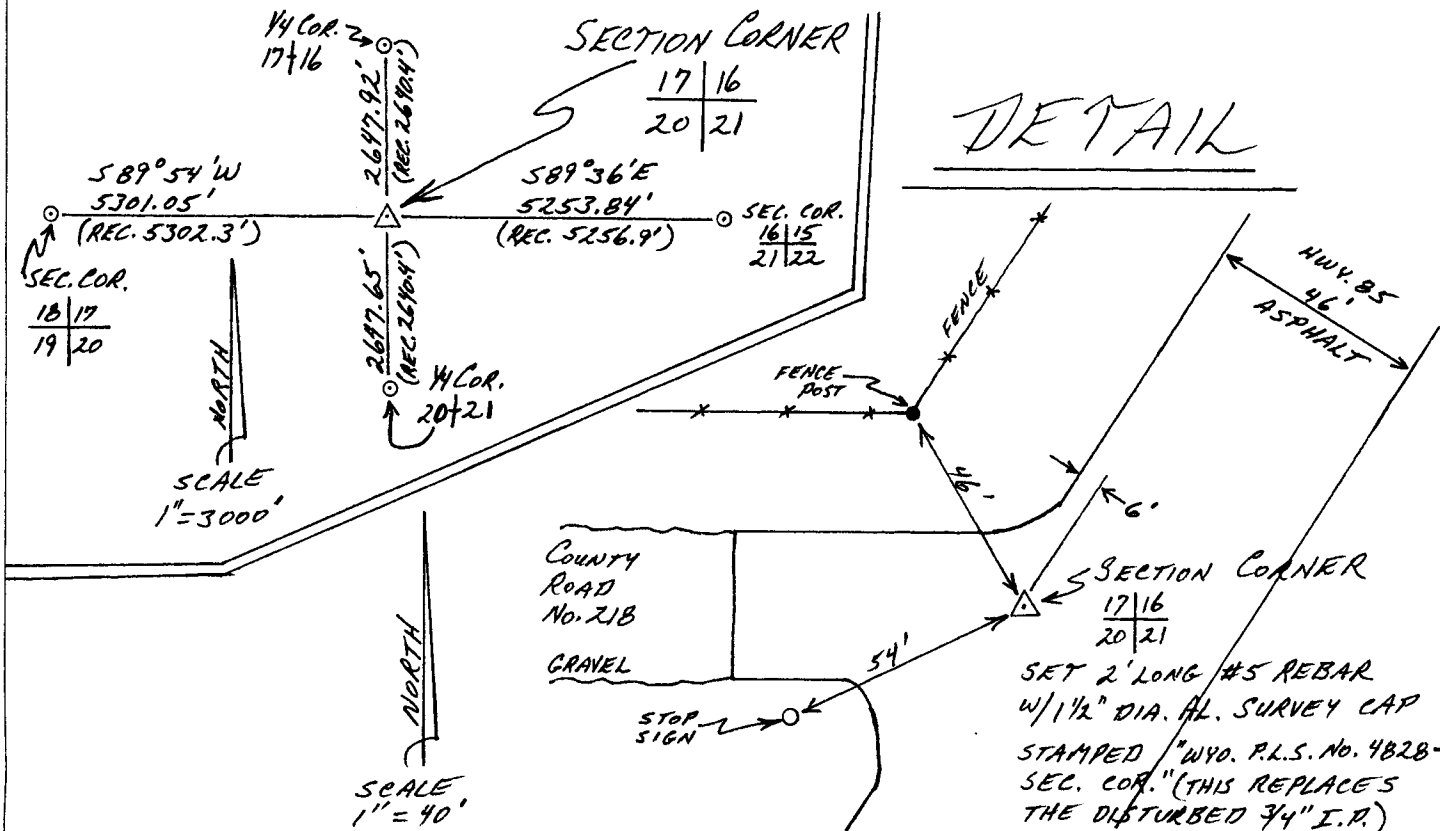
Record of original survey and citation of source of historical information (if corner is lost or obliterated). Description of corner monumentation evidence found and/or monument and accessories established to perpetuate the location of this corner. Sketch of relative location of monument, accessories, and reference points with course and distance to adjacent corner(s) (if determined in this survey). Method and rationale for reestablishment of lost or obliterated corner.

Section Corner common to sections 16, 17, 20 and 21, T.15N., R.66W.

G.L.O. - Lime Stone 20" x 10" x 7"

LARAMIE COUNTY ENGINEER - Book No. 51, Pages 82 - 87, dated Dec. 6, 1968. - "Pipe Set 12-2-70"

FOUND - 3/4" dia. iron pipe with the top 6" bent northward.



Horizontal distances were long in the north-south directions and short in the east-west directions in comparison to the Laramie County Engineer's measurements of 1968. The east-west lay of the land is flat and unobtrusive. The north-south of lay of the land is hilly with course up and down over hills and draws, which may account for possible error in measurement during the Laramie County Engineer's survey. However, the location of the disturbed pipe appears proportionately placed from each of the controlling corners of record. The exception being the southeasterly corner of Section 16 which was displaced and "flat", for which it would not be unreasonable to expect a certain amount of displacement by a couple of feet in position.

The overall measurements support identification of the disturbed 3/4" dia. iron pipe as the monument set by the Laramie County Engineer in re-establishing this Section Corner.

Date of Field Work: 11/17/90 Office Reference:

CROSS INDEX DIAGRAM

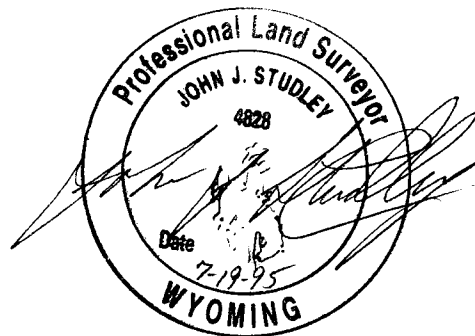
1	2	3	4	5	6	7	8	9	10	11	12	13	14	15	16	17	18	19	20	21	22	23	24	25		
A																										
B																										
C		6		5		4		3		2		1														
D																										
E																										
F																										
G		7		8		9		10		11		12														
H																										
I																										
J																										
K																										
L		18		17		16		15		14		13														
M																										
N																										
O																										
P		19		20		21		22		23		24														
Q																										
R																										
S																										
T		30		29		28		27		26		25														
U																										
V																										
W																										
X		31		32		33		34		35		36														
Y																										
Z																										

Firm/Agency, Address

PREPARED BY:
 John J. Studley
 3509 Frontier St.
 Cheyenne, WY 82001

This corner record was prepared by me or under my direction and supervision.

SEAL & SIGNATURE



BOOK 1402

1131